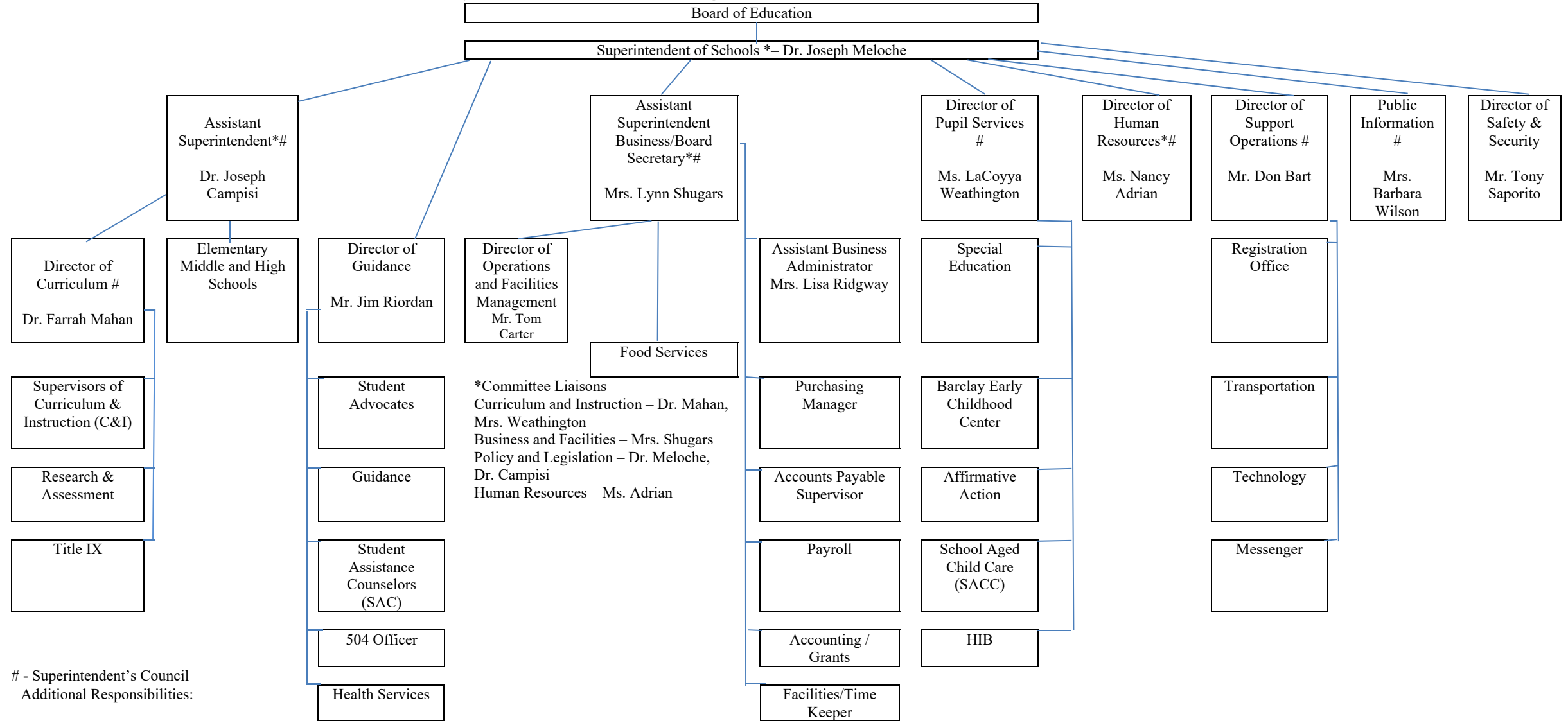


Cherry Hill Public Schools Organization Chart 2016-2017 eff 10/1/16



- Superintendent's Council
Additional Responsibilities:

Assistant Superintendent: ESSA, non public schools

Director of Curriculum: Professional Development, English Language Learners (ELL), Talented and Gifted (TAG)

Business Administrator: Budget, School Nutrition

Director of Pupil Services: IDEA, Homebound

Director of Support Operations: Print Shop, Cable 19, Attendance